

The soluble protease ADAMDEC1 released from activated platelets hydrolyzes platelet membrane pro-EGF to active high molecular weight EGF

Rui Chen[‡], Ge Jin[¶], and Thomas M. McIntyre^{‡,§,1,2}

From the Departments of Cellular & Molecular Medicine[‡], and Molecular Medicine[§], Lerner Research Institute, Cleveland Clinic, Cleveland, 44195 and the Department of Biological Sciences[¶], Case Western Reserve University School of Dental Medicine, Cleveland, Ohio,

Running title: *ADAMDEC1 proteolysis of pro-EGF*

²To whom correspondence should be addressed: Thomas M. McIntyre, Department of Cellular & Molecular Medicine, NE10, Lerner Research Institute, Cleveland Clinic Lerner College of Medicine, 9500 Euclid Ave, Cleveland, OH 44195 USA, Telephone (216) 444-1048, Fax (216) 444-9404, email: mcintyt@ccf.org

Keywords: ADAM, epidermal growth factor (EGF), platelet, growth factor, metalloprotease

ABSTRACT

Platelets are the sole source of EGF in the circulation, yet how EGF is stored or released from stimulated cells are undefined. In fact, we found platelets did not store EGF, synthesized as a single 6 kDa domain in pro-EGF, but rather expressed intact pro-EGF precursor on granular and plasma membranes. Activated platelets released high-molecular-weight (HMW)-EGF, produced by a single cleavage between the EGF and transmembrane domains of pro-EGF. We synthesized a fluorogenic peptide encompassing residues surrounding the putative sessile arginyl residue and found stimulated platelets released a soluble activity that cleaved this pro-EGF1020-1027 peptide. High throughput screening identified chymostatins, bacterial peptides with a central cyclic arginyl structure, as inhibitors of this activity. In contrast, the matrix metalloproteinase/TACE inhibitor GM6001 was ineffective. Stimulated platelets released the soluble protease ADAMDEC1, recombinant ADAMDEC1 hydrolyzed pro-EGF1020-1027, and this activity was inhibited by chymostatin and not GM6001.

Biotinylating platelet surface proteins showed ADAMDEC1 hydrolyzed surface pro-EGF to HMW-EGF that stimulated HeLa EGF receptor (EGFR) reporter cells, and EGFR-dependent tumor cell migration. This proteolysis was inhibited by chymostatin and not GM6001. Metabolizing pro-EGF R1023 to citrulline with recombinant polypeptide arginine deiminase 4 (PAD4) abolished ADAMDEC1-catalyzed pro-EGF1020-1027 peptidolysis, while pretreating intact platelets with PAD4 suppressed ADAMDEC1-, thrombin-, or collagen-induced release of HMW-EGF. We conclude activated platelets release ADAMDEC1 that hydrolyzes pro-EGF to soluble HMW-EGF, HMW-EGF is active, proteolytic cleavage of pro-EGF first occurs at the carboxyl terminal arginyl residue of the EGF domain, and proteolysis is the regulated and rate-limiting step in generating soluble EGF bioactivity.

EGF is the prototypical growth-promoting cytokine (1,2), but also has well-established roles in stimulating tumor-initiating stem cells and tumorigenesis (3). Platelets receive immunoreactive EGF from megakaryocytes

during thrombopoiesis (4), with submaxillary glands and kidney being the major sources of EGF message (5,6). Activated platelets (7-9) are the sole source of EGF in the circulation (10-13). Cytokines, growth factors, and small molecules released from activated platelets promote growth and migration of vascular cells (1,10), and EGF accounts for a portion of the salutary effects of this material on endothelial cell proliferation (14), macrophage activation in atherosclerotic plaques (15), and vessel remodeling (16). However EGF release from platelets is significantly delayed relative to degranulation (7,9,17), leaving EGF storage and release from its only source in the circulation uncharacterized.

EGF is synthesized as a single 6 kDa domain within its ~140 kDa pro-EGF precursor (Fig. 1A), with the EGF domain separated from the single trans-membrane domain by a short 10 residue spacer sequence (1,2). Indeed, all EGF family members are synthesized as single domains of their pro-proteins, although there is no conserved sequence defining the amino or carboxyl proteolytic sites that flank the growth factor domains. In general, the P1 sessile residues (cleavage occurs between the P1 and P1' residues) in these growth factor precursors tend to be small or hydrophobic (1,2,18). These types of residues are preferred by the matrix metalloproteinase family, and membrane-bound ADAM10 and ADAM17 (TACE) of the ADAM subfamily of matrix metalloproteinases proteolyze and solubilize most pro-EGF family members (19-21). However pro-EGF itself is a poor substrate for these ADAM proteases.

Incompletely understood events activate membrane-bound proteases that then become competent to solubilize membrane-bound pro-EGF family members by cleavage between the cytokine domain and a spacer sequence that separates the EGF family member from the transmembrane domain. There is a single soluble member of the ADAM family, ADAMDEC1 (A Disintegrin And Metalloproteinase Domain-Like Protein Decysin-1) (22,23), that would overcome the steric difficulty posed by the juxtamembrane cleavage of a membrane-bound growth factor precursor by a membrane-bound protease, but this enzyme has a mutated Zn⁺²-binding site (23) and displays only dampened proteolytic activity (24).

Pro-EGF differs from its family members in that the P1 residue for both the N- and C-terminal cleavage is the positively charged residue arginine (2). In fact, the first purification of EGF by Dr. Cohen in the 1960s and 1970s found both low and high molecular weight forms of EGF (25), along with a co-purifying arginyl esterase that was “postulated to function in the enzymatic liberation of EGF from a precursor” (26). The identity of this protein remains obscure, but since platelets are the source of EGF in the circulation, then platelets or their megakaryocyte precursors should contain a protease to process pro-EGF to active growth factor whether or not it is the previously purified arginyl esterase. The reduced proteome of platelets contains just four ADAM protease family members including ADAM10 and ADAM17 (27,28), suggesting that one of these four proteases hydrolyzes the sessile arginyl bonds of pro-EGF to form active cytokine.

We determined how platelets store and release EGF to find that platelets do not actually store fully processed and soluble EGF, but rather expressed the pro-EGF precursor on their surface and in granules. Activated platelets released soluble ADAMDEC1 that proteolyzed surface pro-EGF at the appropriate sessile arginyl residue in the spacer sequence to generate soluble high molecular weight (HMW)-EGF. HMW-EGF was an effective ligand for its EGF receptor (ErbB1, Her1), and promoted migration and invasion of untransformed head-and-neck tumor cells.

Results

Platelets express membrane-bound pro-EGF and release HMW-EGF after activation—

Platelets are the primary source of EGF in the circulation, but how stimulated platelets release this EGF to their environment is undefined. We used density gradient centrifugation of platelet lysates and western blotting to determine which platelet compartments contain EGF, and in what form. Immunoblotting showed platelets contained full length pro-EGF in plasma membrane and granule fractions identified by the marker P-selectin (CD62P) (Fig. 1B). Pro-EGF is a single pass transmembrane protein, and flow cytometry confirmed immunoreactive EGF was displayed on the surface of quiescent platelets (Fig. 1C).

We found unstimulated platelets released little immunoreactive EGF over time, but that HMW-EGF appeared in the media after stimulation by either the weak agonist ADP, the strong agonist thrombin, or the PAR1 (the primary platelet thrombin receptor) specific peptide agonist TRAP6 (Fig. 1D). Ultracentrifugation showed that approximately 95% of the EGF released from activated platelets was soluble protein not associated with microparticles (not shown). Recombinant 6 kDa EGF itself induced release of HMW-EGF from platelets that was equivalent to that released by ADP or collagen (Fig. 1E). This experiment also shows, because 6 kDa EGF was only detected after addition of recombinant EGF, that we could have captured and detected this small protein in platelet supernatants had it been present. Thus, stimulated platelets released only HMW-EGF—even hours after stimulation—and not fully processed EGF.

We confirmed the primary EGFR agonist released from activated platelets was a high molecular weight protein by size exclusion filtration. We divided the release into material greater than or less than 50 kDa by filtration to find that the majority of the activity released from thrombin-activated platelets was high molecular weight material (Fig. 1F). We also determined what portion of platelet pro-EGF was released after activation to find that stimulated platelets release only a small portion of their total pro-EGF (Fig. 1G).

Stimulated platelets release pro-EGF proteolytic activity—Platelets express EGF receptor (EGFR, not shown) and we found that thrombin-stimulated platelets released agonists to their supernatants that subsequently induced EGFR autophosphorylation in naïve platelets (Fig. 2A). Release of EGFR agonistic activity was evident by 5 min of stimulation and remained elevated by 10 min relative to material recovered from unstimulated platelets. Solubilization of EGFR agonists from pro-EGF displayed on the platelet surface over time suggests extracellular proteolysis, so we determined whether platelets released a soluble protease using a TNF α sequence suitable for screening ADAM family members (29). We found activated platelets released a hydrolytic activity(ies), which cut-off filters indicated had an apparent size between 35 and 100 kDa (not

shown). We sought a way to implicate this activity in EGF solubilization by performing a high throughput screen of the Lopac library of 5000 biologically active compounds using this peptide substrate to find that chymostatin inhibited the platelet-derived peptidase (not shown).

The externally disposed EGF domain in pro-EGF is separated from the transmembrane domain by a 10 residue spacer sequence (Fig. 1A), limiting the region for proteolytic solubilization. We thus synthesized a fluorogenic pro-EGF peptide centered on the physiologic R₁₀₂₃ cleavage site in pro-EGF. This peptide included the final three carboxyl residues of the EGF domain, the sessile residue R₁₀₂₃, and then the three initial residues of the spacer sequence. We included a fluorescent amino carboxylmethylfluorescein group and a carboxyl DABCYL function to internally quench peptide fluorescence. We found supernatants of activated platelets released a peptidolytic activity that hydrolyzed this fluorogenic pro-EGF peptide (Fig. 2B). This activity, like TNF α peptide hydrolysis, was not inhibited by the matrix metalloproteinase/ADAM inhibitor GM6001 even at a concentration more than twice that necessary to fully block platelet ADAM17 (TACE) (30). We also found that chymostatin reduced release of biologically active EGF from naïve platelets that had been treated with supernatants of thrombin-activated platelets (after irreversible inactivation of thrombin) (Fig. 2A). This chymostatin inhibition of EGFR ligand release from activated platelets confirms that activation-dependent proteolysis occurs at the time of EGFR ligand release.

Activated platelets release the protease ADAMDEC1—Platelets express four ADAM protease family members including 53 kDa ADAMDEC1 (27,28), but ADAMDEC1 is the only soluble (23) protease in this family. We found ADAMDEC1 floated in the granule and plasma membrane fractions during density gradient centrifugation (Fig. 1A), localizing with pro-EGF. Little ADAMDEC1 was released from quiescent platelets or those stimulated with the weak agonist ADP, but stimulation with thrombin led to the rapid and time dependent release of ADAMDEC1 into the media (Fig. 3A). ADAMDEC1 was also released in response

to the TRAP6 peptide, showing the PAR1 receptor alone, although less efficient than thrombin, was a sufficient stimulus to induce release of this protease.

We determined whether ADAMDEC1 was an EGF sheddase by treating quiescent platelets with increasing concentrations of recombinant ADAMDEC1, and recovering solubilized material after this exposure. We found (Fig. 3B) ADAMDEC1 induced release of HMW-EGF, and that the amount of HMW-EGF in the media corresponded to the level of ADAMDEC1 in the incubation. Conversely, the abundance of the family member ADAM10, which is abundant in platelets (27,28), did not correlate to EGF release.

The original purification of EGF shows it physically associates with an uncharacterized arginyl esterase (26), presumed to proteolyze pro-EGF at the amino- and/or carboxy-terminal arginyl residues of the EGF domain (31). This is an unusually strong interaction between a protease and its protein target, suggesting that other proteases hydrolyzing pro-EGF may also form a tight complex with this substrate. To test this, we immunoprecipitated recombinant ADAMDEC1 after incubation with quiescent platelets. We found, by blotting the recovered proteins with anti-EGF antibody, that recombinant ADAMDEC1 co-immunoprecipitated with the HMW-EGF it solubilized from quiescent platelets (Fig. 3C).

ADAMDEC1 is a chymostatin-sensitive pro-EGF protease—We determined whether recombinant ADAMDEC1 proteolyzed the fluorogenic pro-EGF peptide, like the activity in platelet releaseates, to find that it did so, and that this peptidolysis also was inhibited by increasing concentrations of chymostatin (Fig. 4A). Also like the activity(ies) released from activated platelets, this hydrolysis was not inhibited by GM6001. We next determined whether ADAMDEC1 was able to act on the pro-EGF displayed on the platelet surface to generate soluble EGFR agonistic activity. To do this, we treated quiescent platelets with increasing concentrations of recombinant ADAMDEC1, cleared the cells by centrifugation, concentrated the releaseates over 10 kDa cutoff filters, and then diluted this material into media overlaying HeLa EGFR reporter cells. The reporter cells were lysed after increasing amounts of time

before EGFR tyrosine autophosphorylation was determined by western blotting. This experiment showed that ADAMDEC1 solubilized EGFR ligands from resting platelets in a concentration-dependent way, and that the HMW-EGF solubilized by ADAMDEC1 was an active EGFR agonist (Fig. 4B). The two protease inhibitors chymostatin and GM6001 showed that ADAMDEC1 solubilization of active EGFR ligand, like platelet-derived activity, was sensitive to chymostatin, but not the potent ADAM inhibitor GM6001 (Fig. 4C).

Pro-EGF localized in at least two pools in platelets, so to determine whether exogenous ADAMDEC1 hydrolyzes plasma membrane-associated pro-EGF we biotinylated the surface proteins of quiescent platelets. These cells were then treated with ADAMDEC1 in the presence or absence of chymostatin before recovering solubilized biotinylated proteins by streptavidin capture, and then western blotting these proteins for EGF. These data confirm that surface pro-EGF is accessible to ADAMDEC1 (Fig. 4D), and that the hydrolytic product of the externally facing pro-EGF precursor is HMW-EGF.

ADAMDEC1 proteolyzes pro-EGF at the proposed C-terminal sessile arginyl bond to form HMW-EGF—The polypeptide arginine deiminase (PAD) released by *P. gingivalis* inactivates 6 kDa EGF by metabolizing the carboxyl terminal R₁₀₂₃ of fully processed EGF to a citrulline residue (32). This R₁₀₂₃ residue is the proposed proteolytic site in pro-EGF that yields HMW-EGF (33), and so was the central residue in the fluorogenic pro-EGF₁₀₂₀₋₁₀₂₇ peptide. We therefore determined whether recombinant neutrophil PAD4 would target this arginyl residue in the context of the pro-EGF sequence. We found pre-treating the fluorogenic peptide with increasing amounts of PAD4 inhibited, and ultimately abolished, subsequent ADAMDEC1 hydrolysis of the peptide (Fig. 5A). ADAMDEC1 hydrolysis of the pro-EGF peptide thus required R₁₀₂₃, and so only cleaves pro-EGF at its physiologic hydrolytic site.

We determined whether arginyl residues of pro-EGF were critical for ADAMDEC1-induced release of HMW-EGF from platelets. We pre-treated unstimulated platelets with recombinant PAD4 prior to incubation with recombinant ADAMDEC1 to find this impaired release of HMW-EGF (Fig. 5B).

We then tested whether recognition of arginyl residues contributes to proteolysis of platelet pro-EGF by endogenous proteolytic activity. We pre-treated quiescent platelets with recombinant PAD4, and then stimulated the cells, or not, with either a low concentration of thrombin or soluble collagen. We found PAD4 pretreatment reduced HMW-EGF release in response to each agonist (Fig. 5C), so arginyl recognition also aids stimulated pro-EGF proteolysis by platelet-derived activity(ies).

ADAMDEC1 proteolysis of platelet pro-EGF promotes tumor cell migration—Head and Neck squamous cell carcinomas (HNSCC), like many tumors, require EGFR activation and signaling (34), with EGFR expression correlating with progression and survival (35). Accordingly, the humanized monoclonal anti-EGFR antibody Cetuximab® is the first therapy found to increase survival of these patients (36). The H1 subline of the poorly differentiated HNSCC SAS cell line is highly mobile (37), but we found was unable to penetrate through Matrigel if this barrier was depleted of growth factors (Fig. 6A). Supernatants from thrombin-stimulated platelets (after FPR-CMK inhibition of residual thrombin activity), however, markedly enhanced penetration of these tumor cells through the Matrigel/filter barrier. Invasion in response to these supernatants from activated platelets was abolished by inhibition of SAS-H1 EGFR tyrosine kinase by AG1478. The selective and irreversible EGFR inhibitor CL387785 (38), the clinically used anti-EGFR humanized monoclonal antibody Cetuximab, and sequestration with anti-EGF antibody also proved effective inhibitors of SAS-H1 tumor cell penetration into and through the Matrigel barrier. As anticipated, these inhibitors also suppressed EGFR signaling induced by material released from thrombin-stimulated platelets as shown by their suppression of the auto-phosphorylation of EGFR in HeLa reporter cells (Fig. 6B). Thus, stimulated platelets release functional EGF agonist(s) that alters HNSCC tumor cell migration through the EGFR to augment tumor cell invasion (39).

Discussion

Platelets are the only cells in the circulation that contain EGF (10-12), and indeed are a primary source of this growth factor outside

kidney (5,6). How platelets store and release this EGF, however, remains opaque since its release is significantly delayed relative to the rapid and complete release of the proteins and small molecules stored in platelet alpha and dense granules (7,9,11,17). We elucidate a basis for hysteresis in EGF release by finding that platelets do not store processed, soluble EGF, but rather contain its membrane-bound precursor pro-EGF. Fractionating platelet lysates in density gradients showed a portion of pro-EGF did localize to granule fractions, but also that pro-EGF was associated with light, cholesterol-containing plasma membrane fractions. Flow cytometry of intact cells showed the presence of an externally disposed pool of pro-EGF, while biotinylation of the platelet surface shows this pool contributes, although it may not be the sole source, to platelet-derived EGF.

Prior work (12,40) establishes that serum primarily contains HMW-EGF and since plasma lacks immunoreactive EGF, the serum HMW-EGF is platelet-derived. In accordance with this, we observed stimulated platelets released immunoreactive EGF and that this growth factor was exclusively HMW-EGF rather than fully processed 6 kDa EGF. Solubilization of membrane pro-EGF to HMW-EGF reflects proteolysis at a juxtamembrane site, and we found stimulated platelets released a protease to their environment with the capacity to hydrolyze exofacial pro-EGF to soluble HMW-EGF. Notably, the time-dependent release of HMW-EGF represented only a small portion of the total pro-EGF of platelets, both highlighting the difference in its release from material stored in granules and showing that platelets entrapped in thrombi can function as a protracted source of vascular EGF. We also found that this platelet-derived HMW-EGF is a functional EGFR ligand (41), and was competent to stimulating tumor cell migration and invasion through a Matrigel barrier.

The seven functional members of the EGF family (1,42) are expressed as membrane-bound pro-proteins that are proteolyzed to soluble, active factors (18), with the proteases ADAM10 and ADAM17 able to catalyze this event for six family members (21). In contrast, ADAM17 appears unable to solubilize pro-EGF (33), while ADAM10 did not contribute to stimulated release of a chimeric EGF-alkaline phosphatase

reporter in an *ex vivo* model system (21). Notably, the N- and C-terminal sessile residues of the EGF domain in pro-EGF both are arginyl residues, unique in the pro-EGF family (18), and neither ADAM10 nor ADAM17 preferentially cleave after arginyl residues (43). In accordance with this, we found the small molecule GM6001, which effectively inhibits platelet ADAM10 (44) and platelet ADAM17 (30) enzymatic activity, did not reduce ADAMDEC1-catalyzed pro-EGF peptidolytic activity or its pro-EGF proteolytic activity that released active EGFR ligand. Prior work does, however, suggest that some member of the zinc metalloproteinase family is responsible for stimulated shedding of the pro-EGF ectodomain (33).

ADAMDEC1 is a member of the ADAM metalloproteinase family, but an aspartyl residue substitutes for an invariant histidyl residue of the consensus zinc-binding active site of matrix metalloproteinases (22,23). This aspartyl substitution can yield a functional enzyme (23), but ultimately ADAMDEC1 is a poorly performing general protease that lacks a defined physiologic role (24,45). A single nucleotide polymorphism in its gene does, however, correlate with a propensity for thrombosis (46), while its genetic ablation shows the enzyme aids intestinal immunity (47).

Platelets express a thousand copies of ADAMDEC1 per cell (27,28), and because its gene lacks the transmembrane domain of the ADAM family, it is predicted to be (22,23), and is (24,45), soluble. Accordingly, western blotting (above), and mass spectrometry (28), showed ADAMDEC1 was released from platelets after stimulation. This ADAMDEC1 has access to platelet pro-EGF because it solubilized biotinylated surface pro-EGF and because recombinant enzyme co-immunoprecipitated with the HMW-EGF it solubilized from platelet membranes. This unusually robust protease-substrate interaction is consistent with the original purification of EGF, by Dr. Cohen resulting in the 1986 Nobel prize for Physiology or Medicine, that recovered low and high molecular weight forms of EGF (25) with the latter including a co-purifying binding protein (26). This 30 kDa binding protein displayed arginine esterase activity and was “postulated to function in the enzymatic liberation of active EGF from an inactive

precursor” (26). While this enzyme is unlikely to be ADAMDEC1, since submaxillary glands are not known to express this protease (48), it does suggest EGF can form a stable interaction with arginyl-directed esterases.

We found both platelet-derived material and recombinant ADAMDEC1 hydrolyzed active pro-EGF from platelet membranes, so ADAMDEC1 can function as an EGF sheddase. We then sought to determine whether ADAMDEC1 is a physiologically relevant EGF sheddase by screening the Lopac chemical library for inhibitors. This identified chymostatin, a mixture of related bacterial peptides featuring a central cyclic arginyl structure, that inhibited the hydrolysis of a general ADAM family substrate (29) by activity released from activated platelets. The effectiveness of this competitive inhibitor will vary with substrate abundance, but chymostatin, with its highly restricted inhibitory profile (49), proved to effectively inhibit ADAMDEC1 hydrolysis of a pro-EGF peptide encompassing the sessile R₁₀₂₃ residue, and suppress HMW-EGF release from platelets treated with recombinant ADAMDEC1. There should be, however, an additional element necessary for ADAMDEC1 proteolysis since members of the matrix metalloproteinase family are synthesized as inactive pro-proteins regulated by a cysteine switch, but also a range of other molecules (50). We do not know whether, or how, platelet ADAMDEC1 becomes proteolytically competent after platelet activation. We also have not established whether ADAMDEC1 and pro-EGF physically interact in unactivated platelets, so we do not know why platelets do not hydrolyze their pro-EGF over time and then primarily store soluble EGF.

Arginine deimination can modify the R₁₀₂₃ residue in the context of EGF sequence because *P. gingivalis* PAD inactivates EGF by catabolizing this residue to a citrulline residue (32). Catabolism of this residue by recombinant neutrophil PAD4 showed this nascent C-terminal residue of the EGF domain was essential for ADAMDEC1 hydrolysis of the fluorogenic pro-EGF peptide, and that in its absence ADAMDEC1 did not proteolyze other sites in the peptide. We then used recombinant PAD4 to pretreat intact platelets to determine whether recombinant ADAMDEC1 required the

presence of the pro-EGF R₁₀₂₃ residue to solubilize pro- surface EGF. We observed that PAD4 pre-treatment effectively suppressed subsequent ADAMDEC1-induced HMW-EGF release. Activated or dying neutrophils release PAD4 (51-54), suggesting the potential for a novel mode of neutrophil-platelet interaction in inflammation able to dampen vascular remodeling and tumor cell vasculogenesis.

Our data shows the slow step in EGF release from activated platelets is proteolysis of pro-EGF by, at least in part, released ADAMDEC1, and not simply delayed release of stored, fully processed soluble growth factor. Platelet-derived HMW-EGF effectively stimulated HNSSC tumor cell penetration through a Matrigel[®] gel barrier and then their migration through a transwell filter, defining a way for activated platelets to contribute tumorigenesis. This source of EGF will, as well, contribute to endothelial cell proliferation (14), macrophage migration (15), and vasculature maintenance (16). Platelet activation and initiation of thrombus formation are rapid events, with release of stored ADP and newly synthesized thromboxane A₁ augmenting platelet recruitment into developing thrombi (55). In contrast, EGF expression is delayed relative to release by degranulation of materials stored in platelet granules. Activated platelets in thrombi do, however, communicate with vascular cells over prolonged times as shown by IL-1 β synthesis and release over hours in occluded carotid arteries (56). Similarly, HMW-EGF solubilization over prolonged times from activated platelets entrapped in thrombi is positioned to contribute to normal wound repair, but also to tumorigenesis, through EGFR stimulation of normal vascular and epithelial cells as well as tumor and tumor stem cells (57).

EXPERIMENTAL PROCEDURES

Chemicals and reagents—Endotoxin-free human serum albumin (25% solution) was from Baxter Healthcare. Anti-EGF, anti-pEGFR, and horseradish peroxidase-conjugated secondary antibody were from Cell Signaling Technology (Danvers MA). EGF was obtained either from R&D Systems (Minneapolis MN) or Cell Signaling Technology, ADAMDEC1 or ADAMDEC1-flag cDNA from Origene (Rockville MD), and CL387785 from

Selleckchem (Houston, TX). PAD4 protein from Cayman Chemical (Ann Arbor MI). Cetuximab (Bristol-Meyers Squibb) was excess material remaining from clinical procedures. Protease inhibitor mix was from Roche Diagnostics (Indianapolis, IN), with sulfo-NHS-biotin supplied by Thermo (Waltham, MA). Media and sterile filtered HBSS were prepared by the Cleveland Clinic LRI media preparation core. Size filters (50 kDa) were from EMD Millipore (Billerica, MA). The thrombin inhibitor Phe-Pro-Arg-chloromethylketone (FPRCMK) was from Haemalogic Technologies (Essex Junction MA). The fluorogenic pro-EGF₁₀₂₀₋₁₀₂₇ peptide carboxymethylfluorescein-Trp-Glu-Leu-Arg-His-Ala-Gly-His-Lys(DABCYL)-Gly was synthesized and analyzed by the Cleveland Clinic Molecular Technology core. The pro-TNF α peptide TNF-alpha-based substrate, Dabcyl-Leu-Ala-Gln-Ala-Homophe-Arg-Ser-Lys—(5-carboxyfluorescein) was from Enzo Life Science (Farmingdale NY). BioCoat growth factor reduced matrigel invasion chambers were from Corning (Tewksbury MA). Thrombin, AG1478, PGE₁, SDS, chymostatin [a mixture of A, B, and C peptides], GM6001, the PAR1 peptide TRAP6, and all other reagents were from Sigma-Aldrich (St. Louis MO).

Platelet preparation—Human blood was drawn into acid-citrate-dextrose and centrifuged (200 x g, 20 min) without braking to obtain platelet-rich plasma. This protocol was approved by the Cleveland Clinic Institutional Review Board. Purified platelets were prepared from this platelet-rich plasma as in the past (58) where platelet-rich plasma was filtered through two layers of 5- μ m mesh (BioDesign) to remove nucleated cells and recentrifuged (520 x g, 30 min) in the presence of 100 nM PGE₁. The pellet was resuspended in 50 ml PIPES/saline/glucose (5 mM PIPES, 145 mM NaCl, 4 mM KCl, 50 μ M Na₂HPO₄, 1 mM MgCl₂, and 5.5 mM glucose) containing 100 nM PGE₁. These cells were centrifuged (520 x g, 30 min) and the recovered platelets were resuspended in 0.5% human serum albumin in Hank's Balanced Salt Solution (HBSS).

Western blotting—Washed platelets (4 x 10⁸/ml) were treated or not with the stated agonists, the cells were lysed, solubilized in SDS, and resolved by SDS-PAGE gels for western blotting. For some experiments, soluble

proteins were acetone precipitated before western blotting. The proteins were resolved by SDS-PAGE in gradient 4 to 20% cross-linked gels, the proteins transferred to PVDF and probed with the stated primary antibody overnight and then probed with immunoreactive horseradish peroxidase-conjugated secondary antibody. For some experiments, quiescent platelets were biotinylated with membrane impermeant sulfo-NHS-biotin, incubated 30' with concentrated control or ADAMDEC1-transfected CHO cell media in the presence or absence of 10 µg/ml chymostatin. In this case, solubilized material was recovered by avidin chromatography prior to western blotting for EGF

ADAMDEC1 peptidolytic activity—Recombinant ADAMDEC1 concentrated from stably transfected CHO cell supernatants was assayed using a carboxymethylfluorescein-pro-EGF₁₀₂₀₋₁₀₂₇-DABCYL self-quenched fluorogenic peptide [CF-WELRHAGHK_{DABCYL}G]. Hydrolysis was assessed by fluorescence after excitation at 485 nanometers and emission collected at 530 nanometers. For some experiments, the fluorogenic pro-EGF₁₀₂₀₋₁₀₂₇ peptide was incubated (1h) with recombinant PAD4 prior to the hydrolytic reaction.

EGFR activity assay—HeLa reporter cells, or naïve platelets, were treated with material

released from stimulated platelets or platelets treated with recombinant ADAMDEC1, the media removed, and the cells lysed in RIPA buffer before cellular proteins were resolved by SDS-PAGE and immunoblotted with a mix of five phospho-tyrosine EGFR, anti-pEGFR Tyr₁₀₆₈, or other antibodies as stated. Material released from thrombin-stimulated platelets was treated with FPRCK (phenyl-prolyl-arginyl-chloromethyl ketone) to inactivate thrombin before addition to naïve cells.

SAS-H1 cell invasion and migration—SAS-H1 cells were suspended (1×10^5 cells /ml) in DMEM-F12 medium containing 0.1% BSA and any stated inhibitors before 0.5 ml of the suspension was added to the upper well of a rehydrated Matrigel / membrane insert. The lower chamber contained 0.75 ml of either thrombin-activated platelet supernatant or control medium. Cells in the lower chamber were quantified using a hemocytometer after 48 hours of incubation.

Expression of data and statistics—Experiments were performed at least three times with cells from different donors, and all assays were performed in triplicate unless otherwise stated. The standard errors of the mean from all experiments are presented as error bars. Figures and statistical analyses were generated with Prism4 (GraphPad Software). A value of $p \leq 0.05$ was considered statistically significant.

Acknowledgements

We appreciate the aid of Dr. E. Poptic and the Molecular Screening Core, and we greatly appreciate the aid of Dr. S. Bandyopadhyay and W-Z Shen in the Molecular Biotechnology core for synthesis and purification of the fluorogenic pro-EGF peptide. We also thank our many blood donors.

Conflicts of interest: The authors declare that they have no conflicts of interest with the contents of this article.

Author contributions: RC conducted all the experiments, analyzed the results, and aided in manuscript writing, GJ contributed reagents, conceived experimental approaches, and participated in writing this manuscript. TMM conceived the project, obtained project funding, designed experiments, and was the primary element in manuscript preparation.

References

1. Dreux, A. C., Lamb, D. J., Modjtahedi, H., and Ferns, G. A. (2006) The epidermal growth factor receptors and their family of ligands: their putative role in atherogenesis. *Atherosclerosis* **186**, 38-53
2. Harris, R. C., Chung, E., and Coffey, R. J. (2003) EGF receptor ligands. *Exp. Cell Res.* **284**, 2-13
3. Mazzoleni, S., Politi, L. S., Pala, M., Cominelli, M., Franzin, A., Sergi, L., Falini, A., De Palma, M., Bulfone, A., Poliani, P. L., and Galli, R. (2010) Epidermal growth factor receptor expression identifies functionally and molecularly distinct tumor-initiating cells in human glioblastoma multiforme and is required for gliomagenesis. *Cancer Res.* **70**, 7500-7513
4. Ben-Ezra, J., Sheibani, K., Hwang, D. L., and Lev-Ran, A. (1990) Megakaryocyte synthesis is the source of epidermal growth factor in human platelets. *Am. J. Pathol.* **137**, 755-759
5. Rall, L. B., Scott, J., Bell, G. I., Crawford, R. J., Penschow, J. D., Niall, H. D., and Coghlan, J. P. (1985) Mouse prepro-epidermal growth factor synthesis by the kidney and other tissues. *Nature* **313**, 228-231
6. Bell, G. I., Fong, N. M., Stempien, M. M., Wormsted, M. A., Caput, D., Ku, L. L., Urdea, M. S., Rall, L. B., and Sanchez-Pescador, R. (1986) Human epidermal growth factor precursor: cDNA sequence, expression in vitro and gene organization. *Nucleic Acids Res* **14**, 8427-8446
7. Kiuru, J., Viinikka, L., Myllyla, G., Pesonen, K., and Perheentupa, J. (1991) Cytoskeleton-dependent release of human platelet epidermal growth factor. *Life Sci.* **49**, 1997-2003
8. Savage, A. P., Chatterjee, V. K., Gregory, H., and Bloom, S. R. (1986) Epidermal growth factor in blood. *Regul. Pept.* **16**, 199-206
9. Durante, C., Agostini, F., Abbruzzese, L., R, T. T., Zanolin, S., Suine, C., and Mazzucato, M. (2013) Growth factor release from platelet concentrates: analytic quantification and characterization for clinical applications. *Vox Sang.* **105**, 129-136
10. Oka, Y., and Orth, D. N. (1983) Human plasma epidermal growth factor/beta-urogastrone is associated with blood platelets. *J. Clin. Invest.* **72**, 249-259
11. Pesonen, K., Viinikka, L., Myllyla, G., Kiuru, J., and Perheentupa, J. (1989) Characterization of material with epidermal growth factor immunoreactivity in human serum and platelets. *J. Clin. Endocrinol. Metab.* **68**, 486-491
12. Aybay, C., Karakus, R., and Yucel, A. (2006) Characterization of human epidermal growth factor in human serum and urine under native conditions. *Cytokine* **35**, 36-43
13. Joh, T., Itoh, M., Katsumi, K., Yokoyama, Y., Takeuchi, T., Kato, T., Wada, Y., and Tanaka, R. (1986) Physiological concentrations of human epidermal growth factor in biological fluids: use of a sensitive enzyme immunoassay. *Clin. Chim. Acta* **158**, 81-90
14. Bertrand-Duchesne, M. P., Grenier, D., and Gagnon, G. (2010) Epidermal growth factor released from platelet-rich plasma promotes endothelial cell proliferation in vitro. *J. Periodontal Res.* **45**, 87-93

15. Lamb, D. J., Modjtahedi, H., Plant, N. J., and Ferns, G. A. (2004) EGF mediates monocyte chemotaxis and macrophage proliferation and EGF receptor is expressed in atherosclerotic plaques. *Atherosclerosis* **176**, 21-26
16. Schreier, B., Gekle, M., and Grossmann, C. (2014) Role of epidermal growth factor receptor in vascular structure and function. *Curr. Opin. Nephrol. Hypertens.* **23**, 113-121
17. Su, C. Y., Kuo, Y. P., Nieh, H. L., Tseng, Y. H., and Burnouf, T. (2008) Quantitative assessment of the kinetics of growth factors release from platelet gel. *Transfusion (Paris)*. **48**, 2414-2420
18. Sanderson, M. P., Dempsey, P. J., and Dunbar, A. J. (2006) Control of ErbB signaling through metalloprotease mediated ectodomain shedding of EGF-like factors. *Growth Factors* **24**, 121-136
19. Sunnarborg, S. W., Hinkle, C. L., Stevenson, M., Russell, W. E., Raska, C. S., Peschon, J. J., Castner, B. J., Gerhart, M. J., Paxton, R. J., Black, R. A., and Lee, D. C. (2002) Tumor necrosis factor-alpha converting enzyme (TACE) regulates epidermal growth factor receptor ligand availability. *J. Biol. Chem.* **277**, 12838-12845
20. Lee, D. C., Sunnarborg, S. W., Hinkle, C. L., Myers, T. J., Stevenson, M. Y., Russell, W. E., Castner, B. J., Gerhart, M. J., Paxton, R. J., Black, R. A., Chang, A., and Jackson, L. F. (2003) TACE/ADAM17 processing of EGFR ligands indicates a role as a physiological convertase. *Ann. N. Y. Acad. Sci.* **995**, 22-38
21. Sahin, U., Weskamp, G., Kelly, K., Zhou, H. M., Higashiyama, S., Peschon, J., Hartmann, D., Saftig, P., and Blobel, C. P. (2004) Distinct roles for ADAM10 and ADAM17 in ectodomain shedding of six EGFR ligands. *J. Cell Biol.* **164**, 769-779
22. Mueller, C. G., Rissoan, M. C., Salinas, B., Ait-Yahia, S., Ravel, O., Bridon, J. M., Briere, F., Lebecque, S., and Liu, Y. J. (1997) Polymerase chain reaction selects a novel disintegrin proteinase from CD40-activated germinal center dendritic cells. *J. Exp. Med.* **186**, 655-663
23. Bates, E. E., Fridman, W. H., and Mueller, C. G. (2002) The ADAMDEC1 (decysin) gene structure: evolution by duplication in a metalloprotease gene cluster on chromosome 8p12. *Immunogenetics* **54**, 96-105
24. Lund, J., Olsen, O. H., Sorensen, E. S., Stennicke, H. R., Petersen, H. H., and Overgaard, M. T. (2013) ADAMDEC1 Is a Metzincin Metalloprotease with Dampened Proteolytic Activity. *J. Biol. Chem.* **288**, 21367-21375
25. Taylor, J. M., Cohen, S., and Mitchell, W. M. (1970) Epidermal growth factor: high and low molecular weight forms. *Proc. Natl. Acad. Sci. U. S. A.* **67**, 164-171
26. Taylor, J. M., Mitchell, W. M., and Cohen, S. (1974) Characterization of the binding protein for epidermal growth factor. *J. Biol. Chem.* **249**, 2188-2194
27. Burkhart, J. M., Vaudel, M., Gambaryan, S., Radau, S., Walter, U., Martens, L., Geiger, J., Sickmann, A., and Zahedi, R. P. (2012) The first comprehensive and quantitative analysis of human platelet protein composition allows the comparative analysis of structural and functional pathways. *Blood* **120**, e73-82
28. Wijten, P., van Holten, T., Woo, L. L., Bleijerveld, O. B., Roest, M., Heck, A. J., and Scholten, A. (2013) High precision platelet releasate definition by quantitative reversed protein profiling--brief report. *Arterioscler. Thromb. Vasc. Biol.* **33**, 1635-1638

29. Moss, M. L., and Rasmussen, F. H. (2007) Fluorescent substrates for the proteinases ADAM17, ADAM10, ADAM8, and ADAM12 useful for high-throughput inhibitor screening. *Anal. Biochem.* **366**, 144-148
30. Rabie, T., Strehl, A., Ludwig, A., and Nieswandt, B. (2005) Evidence for a role of ADAM17 (TACE) in the regulation of platelet glycoprotein V. *J. Biol. Chem.* **280**, 14462-14468
31. Hirata, Y., and Orth, D. N. (1979) Conversion of high molecular weight human epidermal growth factor (hEGF)/urogastrone (UG) to small molecular weight hEGF/UG by mouse EGF-associated arginine esterase. *J. Clin. Endocrinol. Metab.* **49**, 481-483
32. Pyrc, K., Milewska, A., Kantyka, T., Sroka, A., Maresz, K., Koziel, J., Nguyen, K. A., Enghild, J. J., Knudsen, A. D., and Potempa, J. (2013) Inactivation of epidermal growth factor by *Porphyromonas gingivalis* as a potential mechanism for periodontal tissue damage. *Infect. Immun.* **81**, 55-64
33. Le Gall, S. M., Auger, R., Dreux, C., and Mauduit, P. (2003) Regulated cell surface pro-EGF ectodomain shedding is a zinc metalloprotease-dependent process. *J. Biol. Chem.* **278**, 45255-45268
34. Roskoski, R., Jr. (2014) The ErbB/HER family of protein-tyrosine kinases and cancer. *Pharmacol. Res.* **79**, 34-74
35. Ang, K. K., Andratschke, N. H., and Milas, L. (2004) Epidermal growth factor receptor and response of head-and-neck carcinoma to therapy. *Int. J. Radiat. Oncol. Biol. Phys.* **58**, 959-965
36. Markovic, A., and Chung, C. H. (2012) Current role of EGF receptor monoclonal antibodies and tyrosine kinase inhibitors in the management of head and neck squamous cell carcinoma. *Expert Rev. Anticancer Ther.* **12**, 1149-1159
37. Muramatsu, H., Kogawa, K., Tanaka, M., Okumura, K., Nishihori, Y., Koike, K., Kuga, T., and Niitsu, Y. (1995) Superoxide dismutase in SAS human tongue carcinoma cell line is a factor defining invasiveness and cell motility. *Cancer Res.* **55**, 6210-6214
38. Discafani, C. M., Carroll, M. L., Floyd, M. B., Jr., Hollander, I. J., Husain, Z., Johnson, B. D., Kitchen, D., May, M. K., Malo, M. S., Minnick, A. A., Jr., Nilakantan, R., Shen, R., Wang, Y. F., Wissner, A., and Greenberger, L. M. (1999) Irreversible inhibition of epidermal growth factor receptor tyrosine kinase with in vivo activity by N-[4-[(3-bromophenyl)amino]-6-quinazoliny]-2-butynamide (CL-387,785). *Biochem. Pharmacol.* **57**, 917-925
39. Ohnishi, Y., Lieger, O., Attygalla, M., Iizuka, T., and Kakudo, K. (2008) Effects of epidermal growth factor on the invasion activity of the oral cancer cell lines HSC3 and SAS. *Oral Oncol.* **44**, 1155-1159
40. Hwang, D. L., Lev-Ran, A., Yen, C. F., and Sniecinski, I. (1992) Release of different fractions of epidermal growth factor from human platelets in vitro: preferential release of 140 kDa fraction. *Regul. Pept.* **37**, 95-100
41. Mroczkowski, B., Reich, M., Chen, K., Bell, G. I., and Cohen, S. (1989) Recombinant human epidermal growth factor precursor is a glycosylated membrane protein with biological activity. *Mol. Cell. Biol.* **9**, 2771-2778
42. Bazley, L. A., and Gullick, W. J. (2005) The epidermal growth factor receptor family. *Endocr. Relat. Cancer* **12 Suppl 1**, S17-27
43. Tucher, J., Linke, D., Koudelka, T., Cassidy, L., Tredup, C., Wichert, R., Pietrzik, C., Becker-Pauly, C., and Tholey, A. (2014) LC-MS based cleavage site profiling of the

- proteases ADAM10 and ADAM17 using proteome-derived peptide libraries. *J Proteome Res* **13**, 2205-2214
44. Mezyk-Kopec, R., Bzowska, M., Stalinska, K., Chelmicki, T., Podkalicki, M., Jucha, J., Kowalczyk, K., Mak, P., and Bereta, J. (2009) Identification of ADAM10 as a major TNF sheddase in ADAM17-deficient fibroblasts. *Cytokine* **46**, 309-315
 45. Lund, J., Troeberg, L., Kjeldal, H., Olsen, O. H., Nagase, H., Sorensen, E. S., Stennicke, H. R., Petersen, H. H., and Overgaard, M. T. (2015) Evidence for Restricted Reactivity of ADAMDEC1 with Protein Substrates and Endogenous Inhibitors. *J. Biol. Chem.* **290**, 6220-6229
 46. Berger, M., Moscatelli, H., Kulle, B., Luxembourg, B., Blouin, K., Spannagl, M., Lindhoff-Last, E., and Schambeck, C. M. (2008) Association of ADAMDEC1 haplotype with high factor VIII levels in venous thromboembolism. *Thromb. Haemost.* **99**, 905-908
 47. O'Shea, N. R., Chew, T. S., Dunne, J., Marnane, R., Nedjat-Shokouhi, B., Smith, P. J., Bloom, S. L., Smith, A. M., and Segal, A. W. (2016) Critical role of the disintegrin metalloprotease ADAM-like Decysin-1 (ADAMDEC1) for intestinal immunity and inflammation. *J. Crohns Colitis* **10**, 1417-1427
 48. Uhlen, M., Fagerberg, L., Hallstrom, B. M., Lindskog, C., Oksvold, P., Mardinoglu, A., Sivertsson, A., Kampf, C., Sjostedt, E., Asplund, A., Olsson, I., Edlund, K., Lundberg, E., Navani, S., Szigartyo, C. A., Odeberg, J., Djureinovic, D., Takanen, J. O., Hober, S., Alm, T., Edqvist, P. H., Berling, H., Tegel, H., Mulder, J., Rockberg, J., Nilsson, P., Schwenk, J. M., Hamsten, M., von Feilitzen, K., Forsberg, M., Persson, L., Johansson, F., Zwahlen, M., von Heijne, G., Nielsen, J., and Ponten, F. (2015) Proteomics. Tissue-based map of the human proteome. *Science* **347**, 1260419
 49. Umezawa, H., Aoyagi, T., Morishima, H., Kunitomo, S., and Matsuzaki, M. (1970) Chymostatin, a new chymotrypsin inhibitor produced by actinomycetes. *J. Antibiot. (Tokyo)*. **23**, 425-427
 50. Yamamoto, K., Murphy, G., and Troeberg, L. (2015) Extracellular regulation of metalloproteinases. *Matrix Biol.* **44-46**, 255-263
 51. Fadini, G. P., Menegazzo, L., Rigato, M., Scattolini, V., Poncina, N., Bruttocao, A., Ciciliot, S., Mammano, F., Ciubotaru, C. D., Brocco, E., Marescotti, M. C., Cappellari, R., Arrigoni, G., Millionsi, R., Vigili de Kreutzenberg, S., Albiero, M., and Avogaro, A. (2016) NETosis delays diabetic wound healing in mice and humans. *Diabetes* **65**, 1061-1071
 52. Wong, S. L., Demers, M., Martinod, K., Gallant, M., Wang, Y., Goldfine, A. B., Kahn, C. R., and Wagner, D. D. (2015) Diabetes primes neutrophils to undergo NETosis, which impairs wound healing. *Nat. Med.* **21**, 815-819
 53. Umeda, N., Matsumoto, I., Kawaguchi, H., Kurashima, Y., Kondo, Y., Tsuboi, H., Ogishima, H., Suzuki, T., Kagami, Y., Sakyu, T., Ishigami, A., Maruyama, N., and Sumida, T. (2015) Prevalence of soluble peptidylarginine deiminase 4 (PAD4) and anti-PAD4 antibodies in autoimmune diseases. *Clin. Rheumatol.* **35**, 1181-1188
 54. Wang, S., and Wang, Y. (2013) Peptidylarginine deiminases in citrullination, gene regulation, health and pathogenesis. *Biochim. Biophys. Acta* **1829**, 1126-1135
 55. Offermanns, S. (2006) Activation of platelet function through G protein-coupled receptors. *Circ. Res.* **99**, 1293-1304

56. Brown, G. T., Narayanan, P., Li, W., Silverstein, R. L., and McIntyre, T. M. (2013) Lipopolysaccharide Stimulates Platelets through an IL-1 β Autocrine Loop. *J. Immunol.* **191**, 5196-5203
57. Bodnar, R. J. (2013) Epidermal Growth Factor and Epidermal Growth Factor Receptor: The Yin and Yang in the Treatment of Cutaneous Wounds and Cancer. *Adv Wound Care (New Rochelle)* **2**, 24-29
58. Brown, G. T., and McIntyre, T. M. (2011) Lipopolysaccharide signaling without a nucleus: kinase cascades stimulate platelet shedding of proinflammatory IL-1 β -rich microparticles. *J. Immunol.* **186**, 5489-5496

FOOTNOTES

¹This work was supported in part by National Institute of Health Grant R01 HL130090, the Cleveland Clinic Innovators Award, and the Lerner Research Institute Center-of-Excellence for Cancer-associated Thrombosis. The Clinical and Translational Science Collaborative of Cleveland, 4UL1TR000439, supported the inhibitor screen under the CTSC Core Utilization Pilot Grant Program.

The abbreviations used are: ADAM A Disintegrin And Metalloproteinase; ADAMDEC1, A Disintegrin And Metalloproteinase Domain-Like Protein Decysin-1; FPR-CMK, phenyl-proyl-arginyl-chloromethyl ketone; EGF, epithelium growth factor; EGFR, EGF receptor; HNSCC, Head and Neck squamous cell carcinomas; PAD4, polypeptide deiminase 4.

FIGURE LEGENDS

FIGURE 1. Platelets express pro-EGF, not EGF, and release high molecular weight EGF after activation. A. Schematic representation of the structural features of 1201 residue pro-EGF (UniProtKP-P01133), high molecular weight-EGF (HMW-EGF), and 6 kDa EGF. Also shown are sequences surrounding the sessile R₉₇₂ and R₁₀₂₃ bonds whose protolysis releases 6 kDa EGF (2). The EGF sequence is separated by 10 residues from the single transmembrane domain. B. Density gradient separation of platelet components. Quiescent platelets were homogenized and centrifuged to density equilibrium in a sucrose gradient, with fractions collected from low to high density. Protein in individual fractions was solubilized by SDS, resolved by gradient gel electrophoresis, transferred, and immunoblotted for total EGF, ADAMDEC1 or P-selectin as described in “Material and Materials.” (n=3) C. Platelets display EGF immunoreactivity on their surface. Washed human platelets were fixed with formaldehyde, stained with anti-EGF or isotype matched non-immune antibody, and fluorescence of Alexa Fluor 488-conjugated secondary antibody assessed by flow cytometry (n=3) in a platelet gate defined by forward and side scatter. D. Stimulated platelets release soluble HMW-EGF over time. Washed platelets were treated with buffer, thrombin (0.2 U/ml), ADP (5 μM), or the PAR1 thrombin receptor agonist TRAP6 (30 μM) for the stated times before platelets were cleared by centrifugation. Supernatant protein was precipitated with cold acetone, and total EGF resolved and detected by western blotting. (n=3) E. Stimulated platelets release only HMW-EGF. Washed platelets were treated with the stated agonists up to 3h with buffer, collagen (2 μg/ml), ADP (5 μM), TRAP6 (30 μM), or 20 ng/ml EGF before immunoreactive EGF in the supernatant was detected by western blotting EGF in a gradient gel as in the preceding panel. Fully processed EGF was present in the supernatants only after addition of recombinant EGF as an agonist. (n=3) F. Platelet-derived immunoreactive EGF is primarily HMW-EGF. Supernatants from thrombin-activated platelets (after FPRCMK inhibition of thrombin activity) were divided by filtration through a 50 kDa cut-off filter, with the retained material diluted with Hank’s buffer to the original volume. HeLa cells, as EGFR reporters, were stimulated with identical volumes of these two fractions for the stated times before the HeLa cell proteins were solubilized and resolved by SDS-PAGE. EGFR phosphorylated on tyrosine 1068 was detected by western blotting. (n=3) G. Stimulated platelets release only a small portion of their total pro-EGF. Platelets were stimulated with the stated agonists for the stated times before soluble material was recovered by centrifugation, denatured in SDS, and resolved by electrophoresis in a 4-20% gradient gel before EGF immunoreactivity was detected by western blotting. (n=3)

FIGURE 2. Thrombin-stimulated platelets release a chymostatin-inhibitable pro-EGF hydrolytic activity and EGF bioactivity. A. Chymostatin suppresses release of active EGF from thrombin-stimulated platelets. Platelets were pre-incubated with or without chymostatin (10 μg/ml, 2h) and simulated with thrombin (0.05 U) for 16 h before thrombin was irreversibly inhibited with FPRCMK, and

platelets cleared by centrifugation. HeLa EGFR reporter cells were then incubated with the resulting cell-free media with for the stated times before phospho-EGFR and total β -actin was assessed by western blotting. (n=2) B. Platelets release a pro-EGF endopeptidase. Hydrolysis of fluorogenic pro-EGF₁₀₂₀₋₁₀₂₇ peptide carboxymethylfluorescein-Trp-Glu-Leu-Arg-His-Ala-Gly-His-Lys(DABCYL)-Gly over time by supernatants from thrombin-stimulated platelets in the presence of chymostatin or GM6001. (n=4)

FIGURE 3. Platelets release ADAMDEC1 that associates with HMW-EGF. A. Activated platelets release ADAMDEC1. Washed human platelets were stimulated or not with the stated agonists for the stated times, the cells cleared by centrifugation, and the supernatants immunoblotted for ADAMDEC1. (n=3) B. Recombinant ADAMDEC1 hydrolyzes high molecular weight EGF from platelets. The stated volumes of media concentrated 10-fold from CHO cells transfected with ADAMDEC1-Flag were incubated with freshly isolated quiescent platelets, and incubated (20 min) before the cells were cleared by centrifugation and soluble proteins acetone precipitated, resolved by SDS-PAGE, and western blotted for EGF (*top*) ADAMDEC1 (*middle*) or ADAM10 (*bottom*). (n=3) C. ADAMDEC1 physically associates with HMW-EGF. Recombinant ADAMDEC1-Flag was incubated (30 min) with quiescent platelets, the cells removed by centrifugation, and non-specific proteins cleared with protein G beads. These supernatants were incubated with anti-ADAMDEC1 or non-immune antibody, the antibody captured by protein G beads, and protein was then eluted by SDS and resolved by gradient SDS-PAGE before immunoblotting for EGF. (n=2)

FIGURE 4. Recombinant ADAMDEC1 releases active HMW-EGF from quiescent platelets in a chymostatin-dependent way. A. ADAMDEC1 hydrolyses a fluorogenic pro-EGF peptide, and is inhibited by chymostatin. The fluorogenic pro-EGF₁₀₂₀₋₁₀₂₇ peptide was incubated with recombinant ADAMDEC1 with increasing concentrations of chymostatin, or 25 μ M GM6001 during peptidolysis (n=3) *p<0.05 B. Recombinant ADAMDEC1 solubilizes active EGF from platelets. Quiescent platelets were treated (30 min) with the stated amounts of chimeric ADAMDEC1-Flag before platelets were cleared by centrifugation. The resulting supernatants were incubated with HeLa cells for the stated times before HeLa cell phospho-EGFR was assessed by western blotting with a mix of 5 EGFR phosphotyrosine (*top*) or β -actin (*bottom*) antibodies. (n=2) ADAMDEC1 itself did not stimulate HeLa EGFR (not shown). C. Chymostatin, but not GM6001, inhibits ADAMDEC1 solubilization of active EGF from platelets. Platelets were treated (30 min) with buffer or ADAMDEC1-flag in the presence of chymostatin (10 μ g/ml) or the matrix metalloproteinase inhibitor GM6001 (25 μ M), the supernatants were cleared of platelets by centrifugation, and then incubated with HeLa cells for the stated times. HeLa cell EGFR tyrosine phosphorylation or β -actin content was assessed as in the preceding panel. (n=3). D. Recombinant ADAMDEC1 releases biotinylated EGF from the platelet surface. Platelet surface proteins were labeled with an impermeant biotin derivitization reagent, washed, and incubated (30 min) with the stated volume of media from CHO cells or CHO cells transfected with ADAMDEC1-Flag in the absence or presence of 10 μ g/ml chymostatin. Material in the platelet supernatant was captured with avidin beads, and stripped with SDS before the recovered material was resolved by SDS-PAGE and immunoblotted for EGF. (n=2)

FIGURE 5. ADAMDEC1 requires pro-EGF R₁₀₂₃ for peptidolysis and pro-EGF hydrolysis. A. ADAMDEC1 cleavage of pro-EGF₁₀₂₀₋₁₀₂₇ peptide requires R₁₀₂₃. Fluorogenic pro-EGF₁₀₂₀₋₁₀₂₇ peptide was pre-incubated (1 h) with the stated amount of recombinant PAD4 activity per 100 μ l reaction prior to addition of recombinant ADMADEC1 before the initial hydrolytic rates of the pro-EGF₁₀₂₀₋₁₀₂₇ fluorogenic peptide were assessed by fluorimetry (n=3) *p<0.05. B. PAD4 pre-treatment suppresses ADAMDEC1 proteolysis of platelet pro-EGF. Washed platelets were treated with recombinant PAD4 (13 μ g/ml, 45 min), recovered by centrifugation, and then treated with recombinant ADAMDEC1 (20 min) before cells were cleared by high speed centrifugation. Supernatant proteins were acetone precipitated, resolved by gradient SDS-PAGE, and immunoblotted for EGF. C. PAD4 pre-treatment suppresses HMW-EGF release from stimulated platelets. Washed platelets were treated with a recombinant PAD4 (50 μ g/ml

of a new lot, 45 min), recovered by centrifugation, and then stimulated with 0.05U/ml thrombin or 2 µg/ml collagen for 5 min. The cells were then cleared by high speed centrifugation, proteins in the remaining supernatant were acetone precipitated, resolved by gradient SDS-PAGE, and immunoblotted for EGF as in the proceeding panel. n=2

FIGURE 6. Platelet-derived HMW-EGF is functional. A. Platelet-derived HMW-EGF promotes tumor cell invasion and migration. Washed platelets were incubated with thrombin (0.05U/ml, 37°) overnight and cleared by centrifugation before supernatants were concentrated by filtration. Supernatants or buffer was added to SAS-H1 head-and-neck tumor cells in the upper well of protein-depleted Matrigel® Bio-Coat PET membrane chambers wells along with EGFR inhibitors (AG1478, 20 µM; CL387785, 20µM; humanized anti-EGFR monoclonal antibody Cetuximab, 2 µg/ml) or anti-EGF antibody (2 µg/ml) as shown. Cells that had migrated through the barrier after 48 h were solubilized with trypsin and enumerated with a hemocytometer. (n =2 with triplicate wells with data combined for analysis by one-way non-parametric ANOVA Kruskal-Wallis testing with post-hoc Dunn's testing). *** p<0.0001 B. The EGFR ligand released from thrombin-activated platelets is EGF. HeLa cells were stimulated (10 min) with buffer or concentrated supernatants of thrombin-stimulated platelets after pre-treatment (20 min) with EGFR inhibitors or anti-EGF at concentrations used in the preceding panel. Recovered HeLa cells were lysed, their proteins solubilized in SDS, and then separated by electrophoresis prior to detecting anti-EGFR phosphorylated on tyrosine 1068 by western blotting. n=2.

FIGURE 1

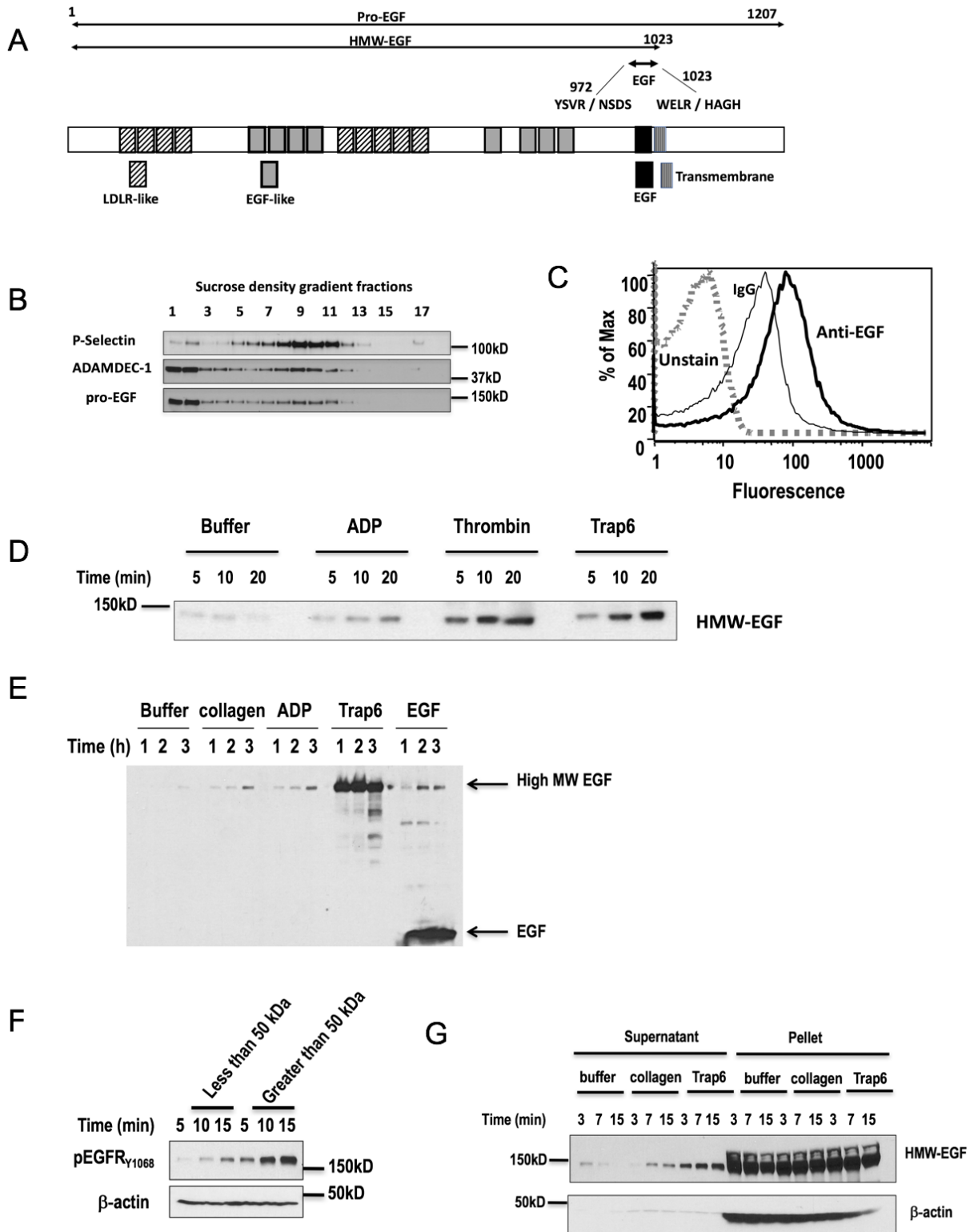


FIGURE 2

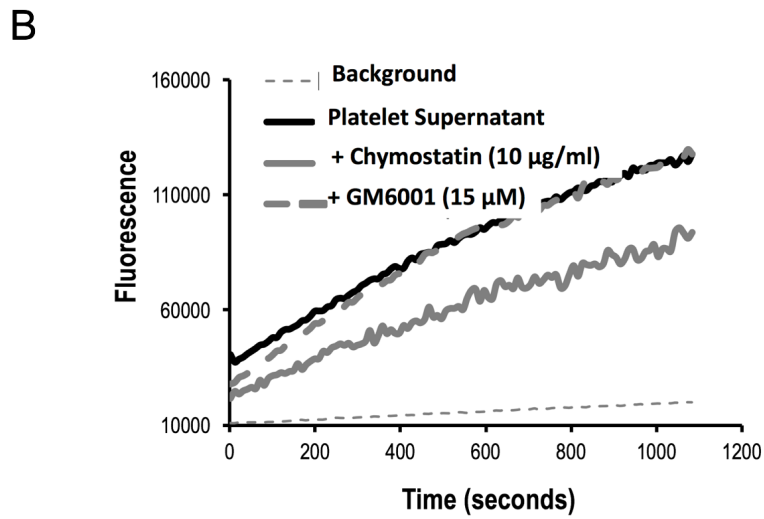
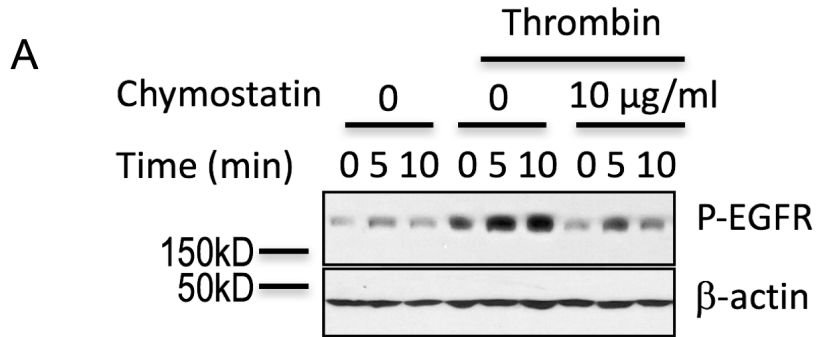


FIGURE 3

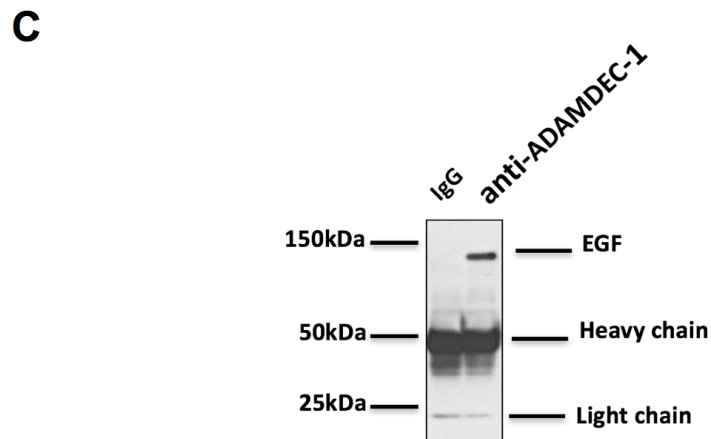
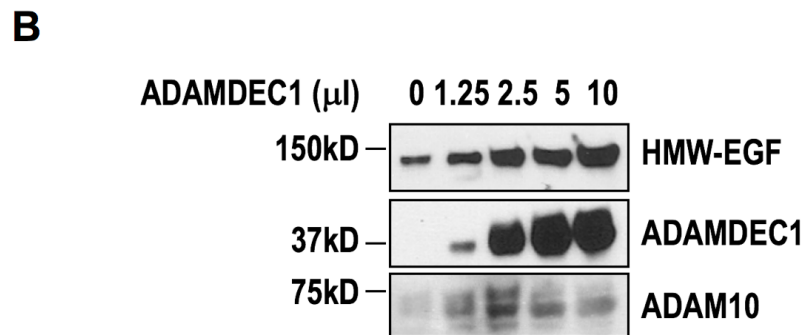
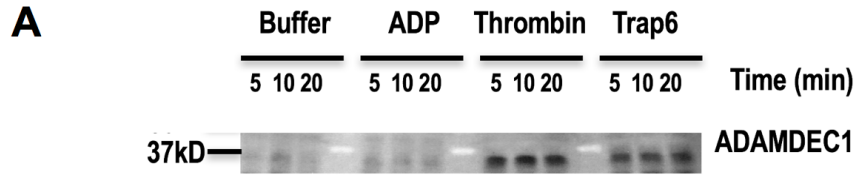


FIGURE 4

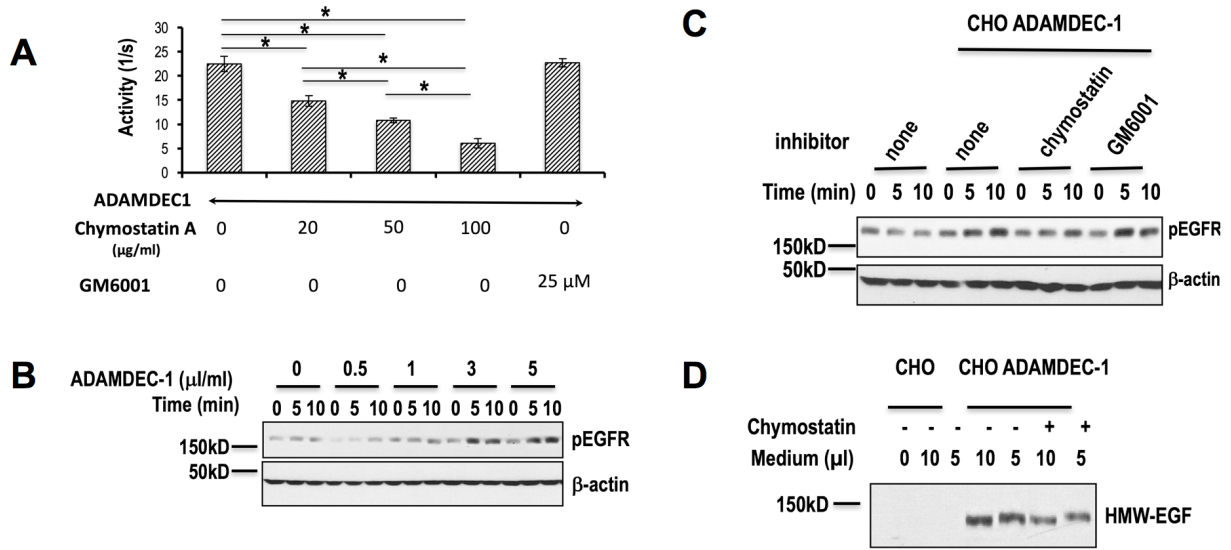


FIGURE 5

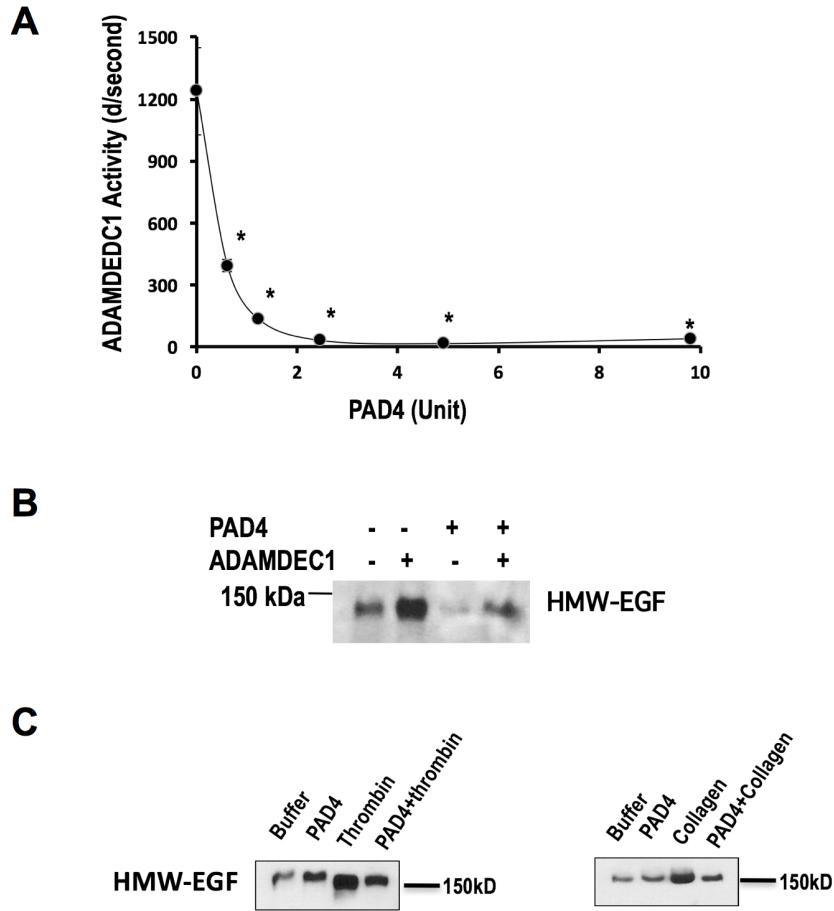
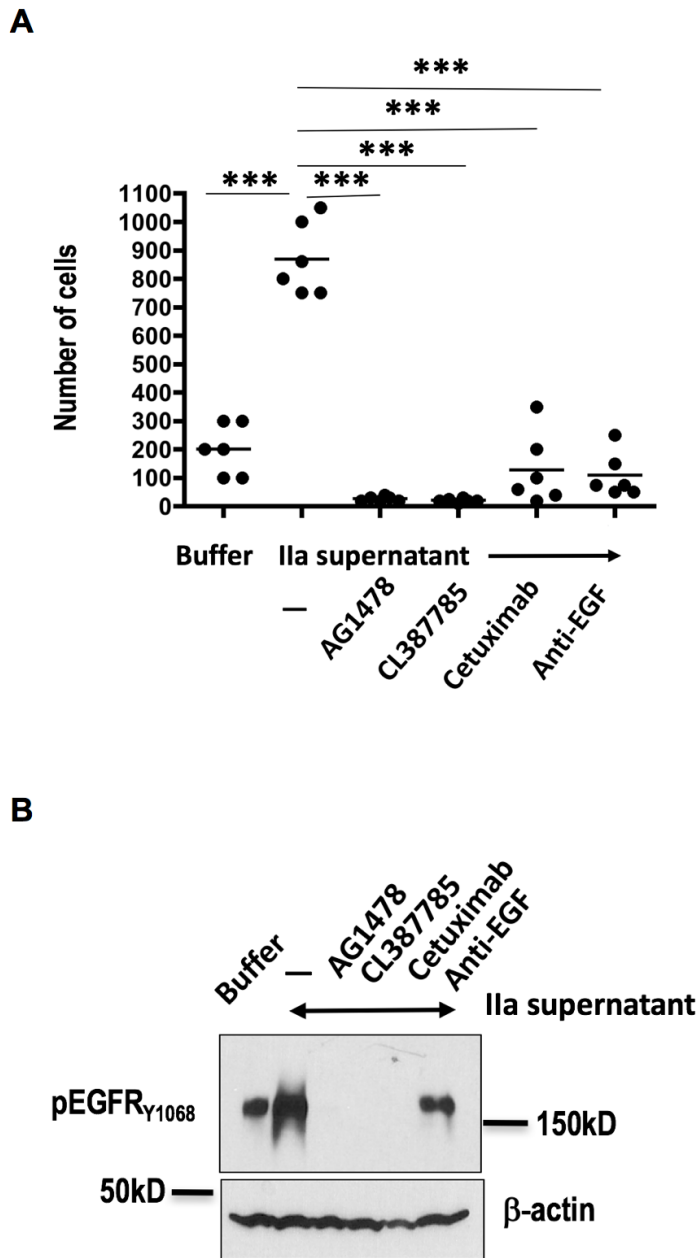


FIGURE 6



The soluble protease ADAMDEC1 released from activated platelets hydrolyzes platelet membrane pro-EGF to active high molecular weight EGF

Rui Chen, Ge Jin and Thomas M McIntyre

J. Biol. Chem. published online April 28, 2017

Access the most updated version of this article at doi: [10.1074/jbc.M116.771642](https://doi.org/10.1074/jbc.M116.771642)

Alerts:

- [When this article is cited](#)
- [When a correction for this article is posted](#)

[Click here](#) to choose from all of JBC's e-mail alerts

This article cites 0 references, 0 of which can be accessed free at <http://www.jbc.org/content/early/2017/04/28/jbc.M116.771642.full.html#ref-list-1>